

STAKEHOLDER DIALOGUE ATTENDEE'S 2016

THE 2030 PLAN: BUILDING FOR TOMORROW

Zurich, 4th and 5th of February, 2016



LafargeHolcim

SHORT BIOGRAPHIES

FACILITATOR



Michele Wheatley is a communications specialist with 26 years' experience in freelance, consultancy and in-house roles, Michele has a wide range of public relations skills including media training, environmental issues management, community relations, media relations and internal communications. She has worked in the construction materials sector for 20 years, with a particular focus on cement. Her freelance role has seen her involved in the development of sustainability strategies and reports, and facilitating stakeholder sessions in the UK.

www.wheatleypr.co.uk

STAKEHOLDERS

Christian Schaffner is the Executive Director of the Energy Science Center (ESC) at the Swiss Federal Institute of Technology (ETH Zurich). He has worked in the field of energy policy, politics and research for over a decade, facilitating the change in the energy sector towards a sustainable energy supply. Prior to taking the position at ETH, he was Head of Energy Supply Section at the Swiss Federal Office for energy.



Ewald Simandl was a member of the Lafarge Board of Directors, designated to represent employees by the European Works Council of legacy Lafarge Group.



Ewald began his career in the former "Perlmooser Zementwerke AG" in Vienna, which was bought in 1996 by Lafarge. He brings an employee and change management perspective to the dialogue.

Fiona Murie is the Global Director of Health and Safety and Construction at Building and Woodworkers International (BWI). She has been closely involved in the international labor movement's efforts to improve compliance with labor standards for over 15 years.



Fiona also has extensive field experience of working with workers, unions and employers involved in projects funded by international financial institutions.

Guillaume Habert is Professor in Sustainable Construction at the Department of Civil, Environmental & Geomatic Engineering at the Swiss Federal Institute of Technology (ETH Zurich). He is a member of the Academic Committee (AC) of the LafargeHolcim Foundation. He studied environmental and earth science at École Normale Supérieure in Paris and obtained a PhD in geology from Université de Toulouse, France



Howard Klee is an independent expert with experience in the cement sector and in sustainability issues. He has extensive experience in Europe, North America and China with private sector, government and NGO organizations solving a broad range of business, technical, environmental, and policy challenges. He was previously the Director of The Cement Sustainability Initiative (CSI) – a subset of the WBCSD.



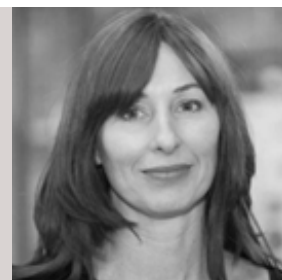
Jean-Paul Jeanrenaud is director of “One Planet Leaders” at WWF International, responsible for Business Innovation and Education Programs. He is also the co-founder of the One Planet MBA, in the Business School, University of Exeter; and is the founder of One Planet Leaders, WWF’s applied sustainability program for senior executives, which is run jointly with IMD. Prior to this he was Director of Corporate Relations at WWF International until 2014, leading the Network’s engagement with the private sector, and coordinating transformative business partnerships that help build a sustainable global economy.



Kartikeya Singh is based at the US Department of Energy where he is working across the U.S. government interagency to support and manage U.S. – India bilateral energy cooperation. Previously, Kartikeya was a consultant with the Environmental Defense Fund. He is the founder of the Indian Youth Climate Network (IYCN), which has served as a forum for voices of the budding youth climate movement across South Asia. He has been involved with international climate negotiations since the UN climate talks in Bali in 2007 and has served as part of the negotiating team of the government of Maldives at the climate talks from 2009 to 2012.



Maria Atkinson AM is a Sustainability Business Advisor as well as Co-Founder and Founding CEO of the Green Building Council of Australia. She was awarded the Member of the General Division of the Order of Australia (AM) for “service to the construction and real estate sector, particularly as a leader and contributor to environmentally sustainable building development in Australia” in 2012. She is also a director of the United States Green Building Council, and a member of the US Studies Centre Council of Advisors.



Sheila Khama is a director of the Africa Natural Resources Center at the African Development Bank since 2013. She is also a public policy advisor, a sustainable development practitioner, and a former mining industry executive with 20 years’ work experience in and out of Africa.



She has extensive knowledge of the extractives sector having worked 14 years in mining. From 2010, Sheila led an extractives program to support sub-Saharan policymakers provided by the African Center for Economic Transformation (ACET) in Ghana.

Silvia Lara is the Executive Director of Asociación Empresarial para el Desarrollo (AED) since 2007. AED Costa Rica (Asociación Empresarial para el Desarrollo) is a private non-profit organization created by Costa Rican and foreign owned businesses in 1997 to mobilize corporate efforts, in an efficient and effective manner, towards social investments in priority issues for national development. She has also worked for various UN agencies such as UNDP and UNICEF, for IUCN, World Conservation Union and the Inter-American Institute of Human Rights.



CONTACT US AT LAFARGEHOLCIM

Sustainable Development

Bernard Mathieu

Phone +41 58 858 54 61

sdperformancetools@lafargeholcim.com

Investor Relations

Michel Gerber

Phone +41 58 858 87 87

lafargeholcim.com